

Legend

- East Anglia TWO Windfarm Site
- East Anglia TWO Offshore Cable Corridor
- Former East Anglia Zone

S. Spinulosa (n/sample)

- 0
- 1 - 15
- 16 - 30
- 31 - 100
- 101 - 500
- 501 - 1,660



Rev	Date	By	Comment
1	13/05/2019	FC	First Issue.

Prepared:	FC
Checked:	PM
Approved:	PP

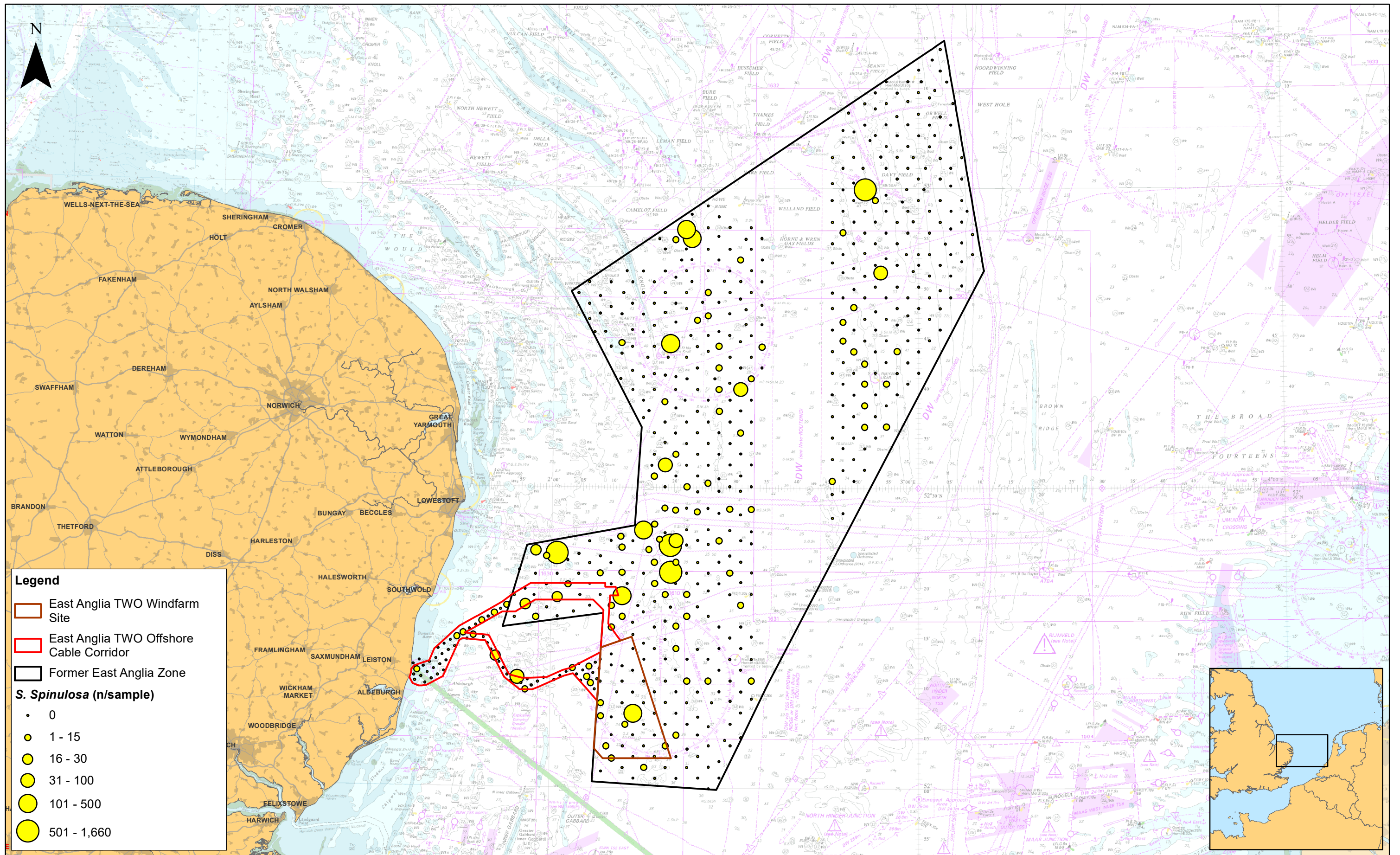
1:200,000
Scale @ A3

0 2.5 5 10 Km

East Anglia TWO

Sabellaria Spinulosa Abundance

Drg No	EA2-DEV-DRG-IBR-000573	
Rev	1	Datum: WGS 1984
Date	13/05/19	Projection: Zone 31N
Figure	9.12a	



1	13/05/2019	FC	First Issue.
Rev	Date	By	Comment

Prepared:	FC	1:650,000
Checked:	PM	Scale @ A3
Approved:	PP	0 5 10 20 Km

East Anglia TWO
Sabellaria Spinulosa Abundance in the Context of the Former East Anglia Zone

Drg No	EA2-DEV-DRG-IBR-000574	
Rev	1	Datum: WGS 1984
Date	13/05/19	Projection: Zone 31N
Figure	9.12b	